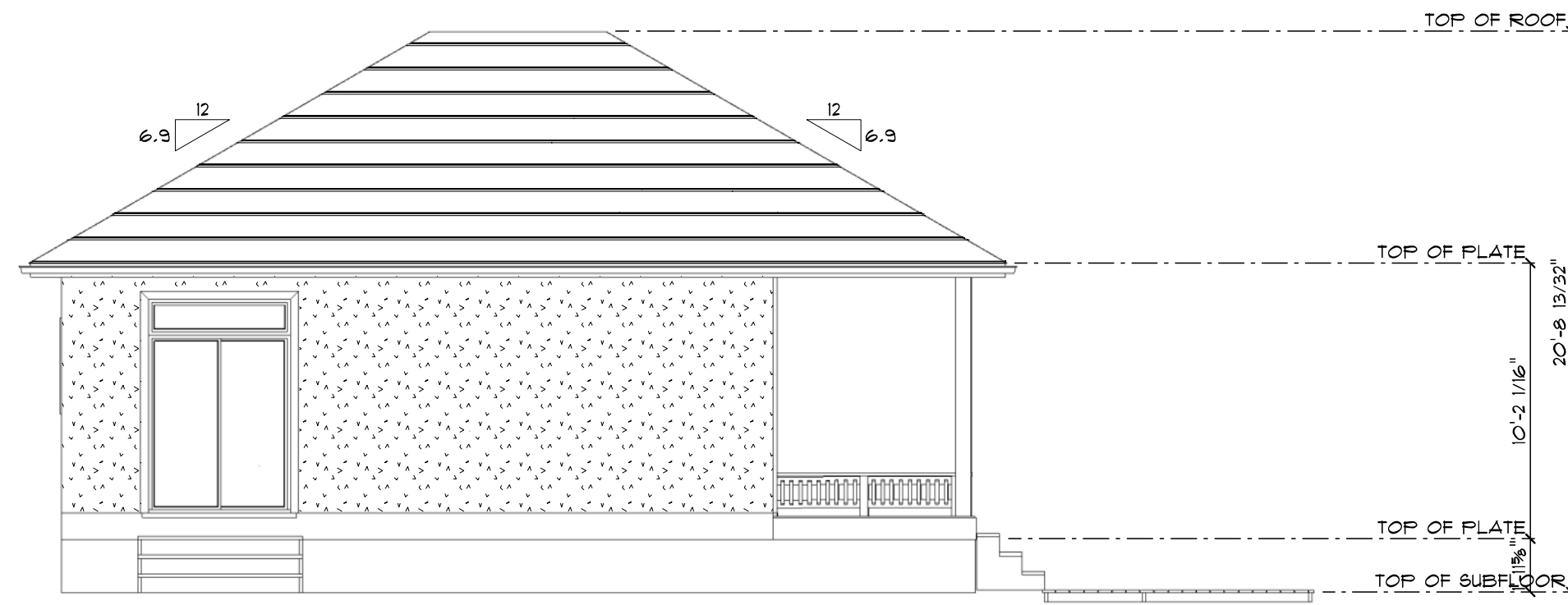


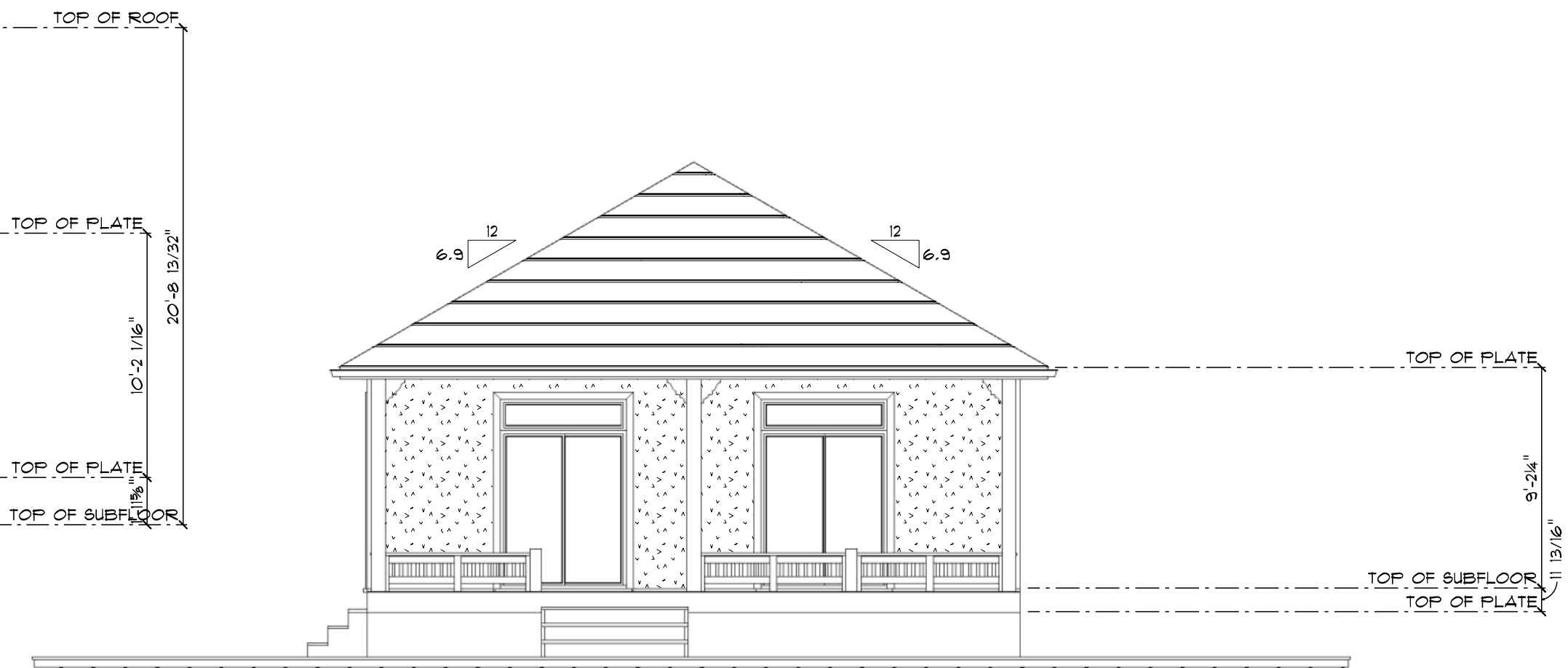
**CARIBBEAN COTTAGE 2 BED**  
 SCALE: 0.3000" = 1'-0"

Drawings issued for client approval supercede all previous versions. Architectural drawings to be read in conjunction with structural detailing and fabrication GA drawings

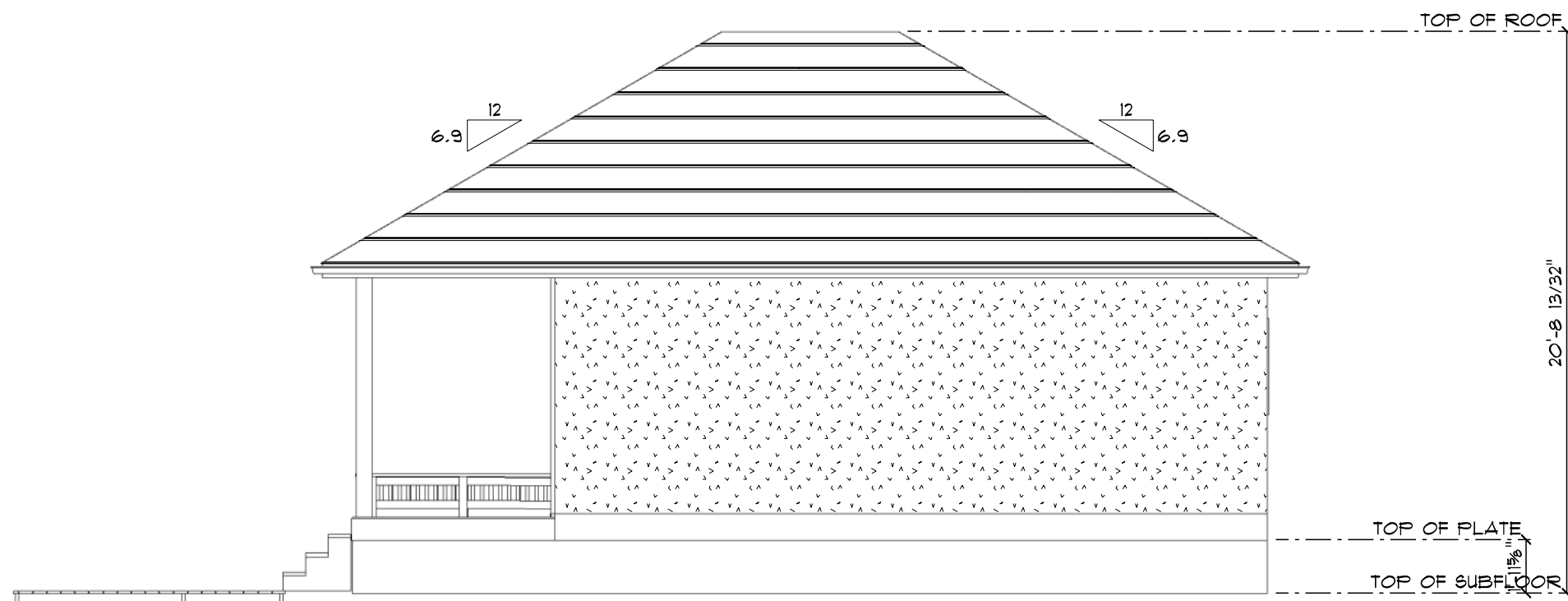
	APPROVED FOR: FABRICATION ISSUED FOR INFORMATION	NOTES: THE COMPANY USES METRIC DEMENSIONS AS THE PRINCIPAL DENOMINATION. ALL SLAB, FOUNDATION AND CONCRETE WORKS ARE BY OTHERS	DATE: 19 July 2023		<b>Caribbean Cottage Range</b>	
	REVISION:		SCALE: 0.3000" = 1'-0" DRAWN BY: BAUHU DESIGN		PAGE: 1/2	PAGE TITLE: Floorplan



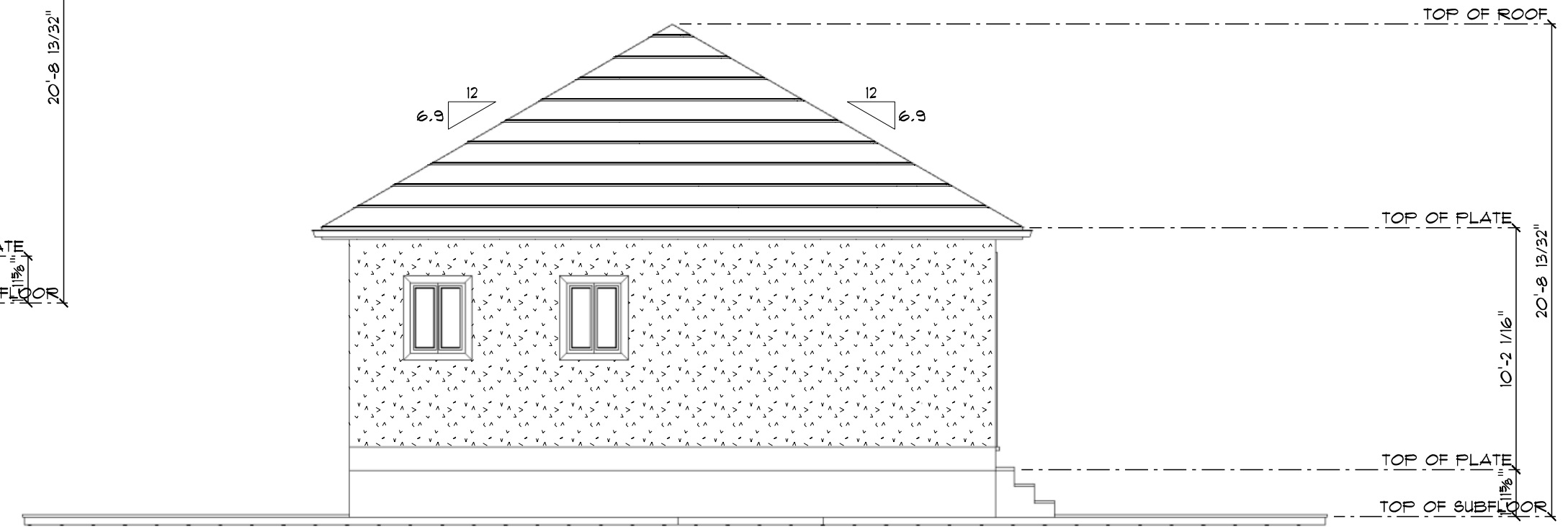
**REAR ELEVATION**  
SCALE: 0.1719" = 1'-0"



**LEFT ELEVATION**  
SCALE: 0.1719" = 1'-0"



**FRONT ELEVATION**  
SCALE: 0.1719" = 1'-0"



**RIGHT ELEVATION**  
SCALE: 0.1719" = 1'-0"

Drawings issued for client approval supercede all previous versions. Architectural drawings to be read in conjunction with structural detailing and fabrication GA drawings

	APPROVED FOR: FABRICATION ISSUED FOR INFORMATION	NOTES: THE COMPANY USES METRIC DEMENSIONS AS THE PRINCIPAL DENOMINATION. ALL SLAB, FOUNDATION AND CONCRETE WORKS ARE BY OTHERS	DATE: 19 July 2023		<b>Caribbean Cottage Range</b>	
	REVISION:		SCALE: 0.1719" = 1'-0"		PAGE: <b>2/2</b>	PAGE TITLE: Elevations
			DRAWN BY: BAUHU DESIGN			