

FLOORPLAN  
SCALE: 1:50

USVI

**BAUHU**  
MODULAR • BUILDING • SOLUTIONS  
www.bauhu.com 00 44 203 696 2349 www.bauhu.co.uk

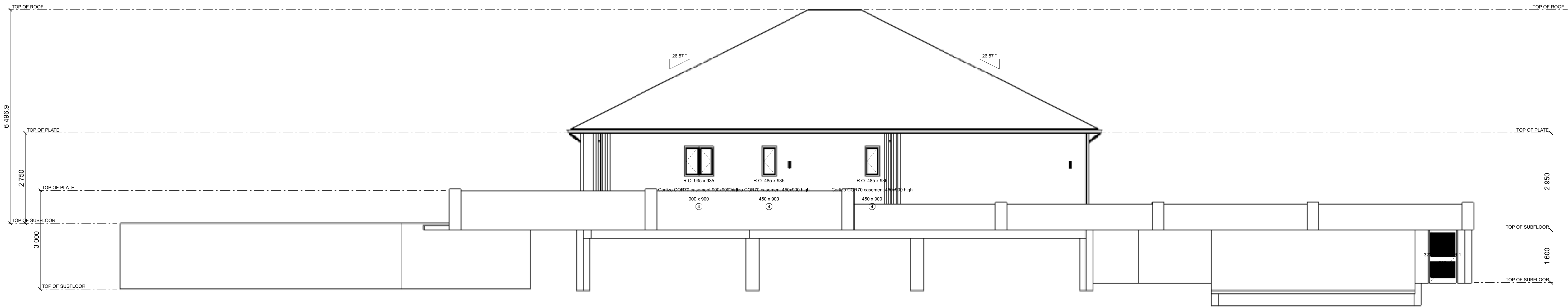
NOTES:  
THE COMPANY USES METRIC DIMENSIONS AS  
THE PRINCIPAL DENOMINATION  
ALL SLAB, FOUNDATION AND CONCRETE WORKS  
ARE BY OTHERS

SCALE: 1:50  
DRAWN BY: BAUHU DESIGN  
DATE: 29 December 2022

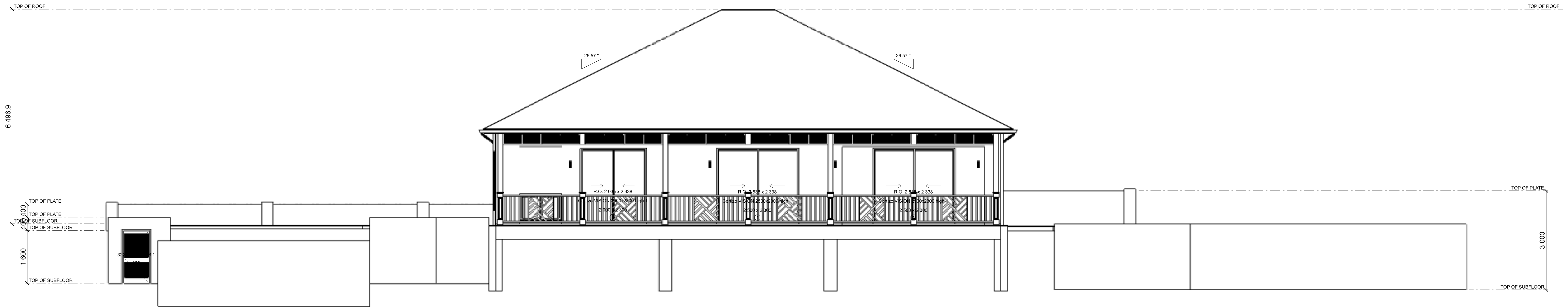
SECTION LETTER  
**A**  
PAGE NUMBERS  
**11**

NOT FOR CONSTRUCTION  
CHECKED BY:

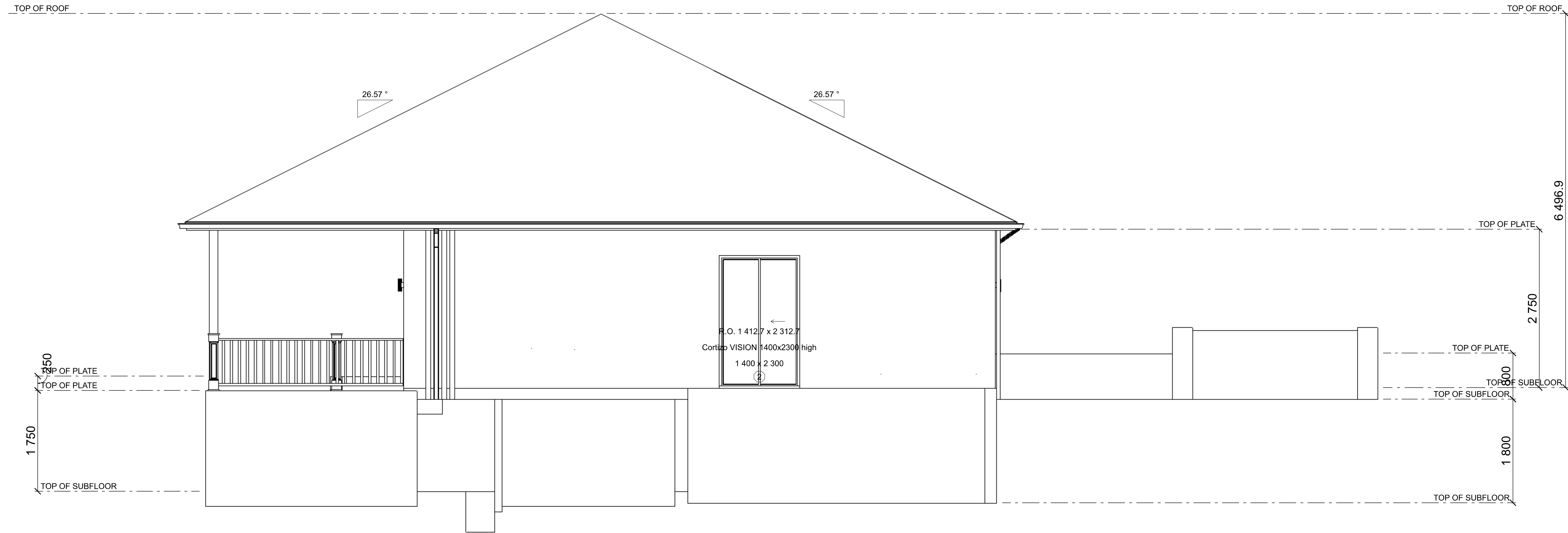
PAGE: **1/3**  
Floorplan



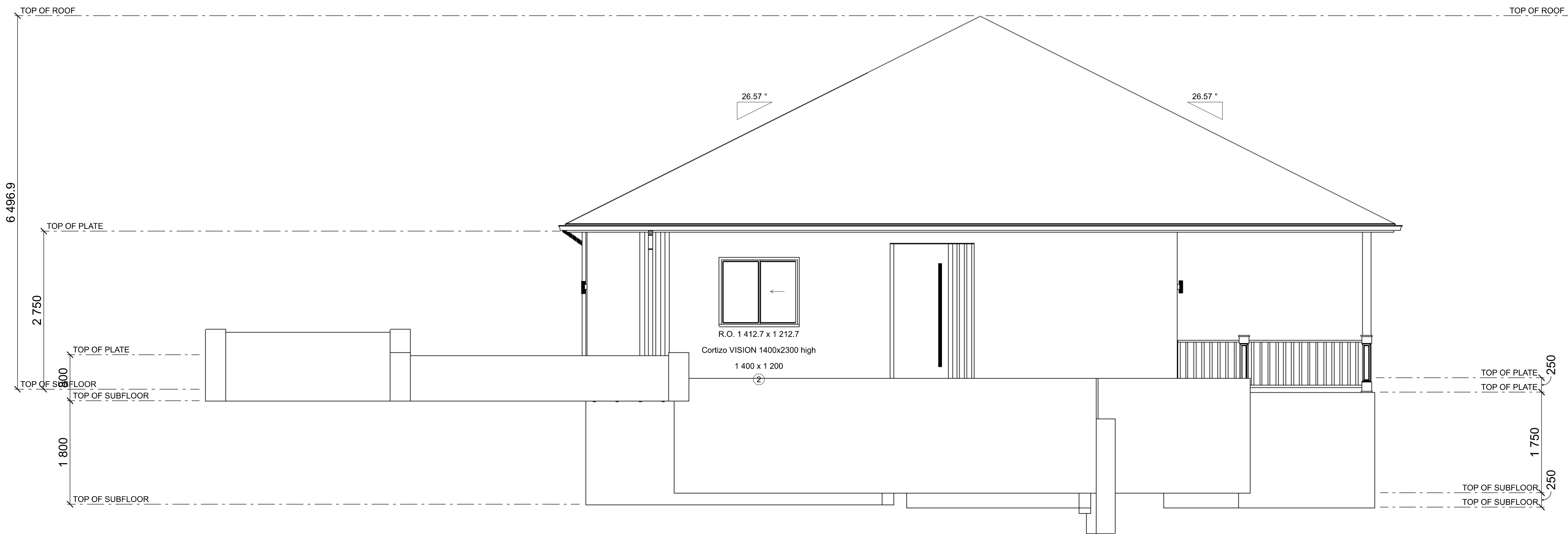
**FRONT ELEVATION**  
SCALE: 1:60



**REAR ELEVATION**  
SCALE: 1:60



**LEFT ELEVATION**  
SCALE: 1:40



**RIGHT ELEVATION**  
SCALE: 1:40

**BAUHU WINDOWS**  
Cortizo COR Vision aluminium slider  
Integrated stainless steel structure bar  
Laminated glass 4mm+4mm  
Argon filled insulation gap 16mm  
Low E solar control glass 6mm

**CEILING**  
Light gauge steel joist  
Suspended ceiling hanger system  
160mm mineral wool insulation  
12.5mm fire panel  
12.5mm moisture board  
Acrylic paint finish

**CONCRETE NOTE**  
Slab, sub slab, foundations footings and all concrete works by others